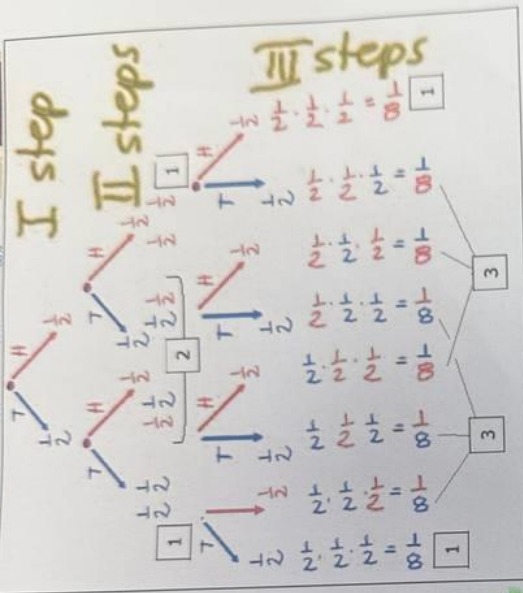
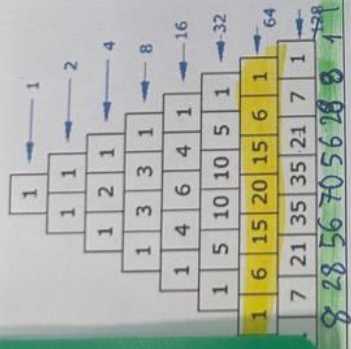


formalism => Uni

Pascal's triangle



$$(a+b)^0 = 1$$

$$(a+b)^1 = a+b$$

$$(a+b)^2 = a^2 + 2ab + b^2$$

$$(a+b)^3 = a^3 + 3a^2b + 3ab^2 + b^3$$

$$(a+b)^4 = a^4 + 4a^3b + 6a^2b^2 + 4ab^3 + b^4$$

$$(a+b)^5 = a^5 + 5a^4b + 10a^3b^2 + 10a^2b^3 + 5ab^4 + b^5$$

$$(a+b)^6 = a^6 + 6a^5b + 15a^4b^2 + 20a^3b^3 + 15a^2b^4 + 6ab^5 + b^6$$

$$(a+b)^8 = a^8 + 8a^7b + 28a^6b^2 + \dots$$

1.75 quest



$$\frac{4}{8} = 0.5$$



$$\frac{2}{8} = 0.25$$



$$\frac{1}{8} = 0.125$$



$$\frac{1}{8} = 0.125$$

Avg num ? to ^{1st} know cards

1) $1 \cdot 0.5 \rightarrow$ Right 5

2) $2 \cdot 0.25 \rightarrow$ Right 2

3) $3 \cdot 0.125 \rightarrow$ Right 12

3) $3 \cdot 0.125 \rightarrow$ Right 12

↑

$$0.5$$

$$0.5$$

$$0.375$$

$$0.375$$

$$1.75$$

Question per card

2 quest



1) Black? No



2) Red? No

Blue

2 questions

- Red card $\frac{4}{8}$
- blue card $\frac{2}{8}$
- black card $\frac{1}{8}$
- grid card $\frac{1}{8}$

$$\log_2 \left(\frac{1}{0.5} \right) = \log_2(2) = 1$$

$$\log_2 \left(\frac{1}{0.25} \right) = \log_2(4) = 2$$

$$\log_2 \left(\frac{1}{0.125} \right) = \log_2(8) = 3$$

$$\frac{4}{8} \times 2 + \frac{2}{8} \times 2 + \frac{1}{8} \times 2 + \frac{1}{8} \times 1$$

$$1 + \frac{0.5}{0.25} + 0.25 + 0.125$$

$$= 1.875$$

$$\sum_{i=1}^4 p_i(x) \cdot \log_2 \left(\frac{1}{p_i(x)} \right)$$

Entropy Shannon

1.625

Average Number of Questions

1 Quest 2q 3q

$$\frac{4 \times 1 + 4 \times 2 + 6 \times 3}{8} = \frac{1 \cdot 4 + 2 \cdot 2 + 3 \cdot 2}{8} = 1.75$$

Entropy

$$\frac{14.18}{8.1} = 60$$

$$\frac{5 + 6 \cdot 2}{8} = 1.375$$

1st 2nd

$$\frac{1 \times 5 + 2 \times 1 + 3 \times 1}{8} = \frac{5 + 2 + 3}{8} = \frac{10}{8} = 1.25$$

question card

1.625

2) = 1
2

2(4) = 2

2(8) = 3

$$\log_2(1.6) = 0.678 = 0.4$$

$$\log_2\left(\frac{1}{0.5}\right) = \log_2(2) = 1$$

$$\log_2\left(\frac{1}{2 \cdot 0.125}\right) = 0.125$$

$$\frac{5}{8}$$

1) 0.625 · 1 = 0.625

$$\frac{1}{8}$$

2) 0.125 · 2 = 0.25

$$\frac{1}{8}$$

3) 0.125 · 3 = 0.375

$$\frac{1}{8}$$

3) 0.125 · 3 = 0.375

$$0.625 + 0.25 + 0.25 + 0.25 = 1.375$$

1.375

5.5 = 25
6.6 = 36
7.7 = 47


5%

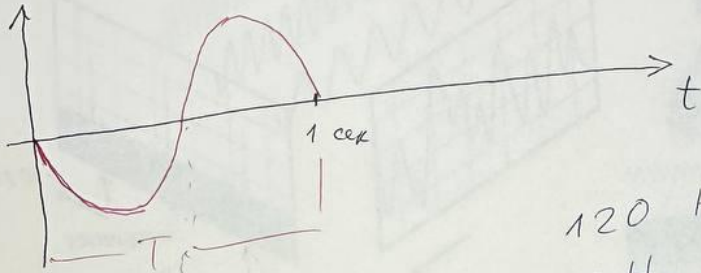
49

- 0.4
- 0.375
- 0.375
- 0.375



mean

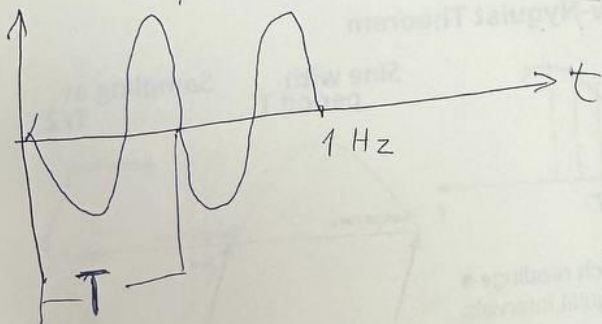
1 Hz mean 60 per minute 
 $1 \text{ Hz} = 10^6$ $T = 1 \text{ sec}$ 1 per second



120 Heart Rate

2 Hz

$$T = \frac{1}{2} \text{ sec}$$



180 Heart Rate

3 Hz

$$T = \frac{1}{3}$$

$$f = \frac{1}{T}$$

$$T = \frac{1}{f}$$